

# Gas Burner Reset

**\*Gas burners and related equipment should ONLY be serviced by a Qualified Gas Technician\***

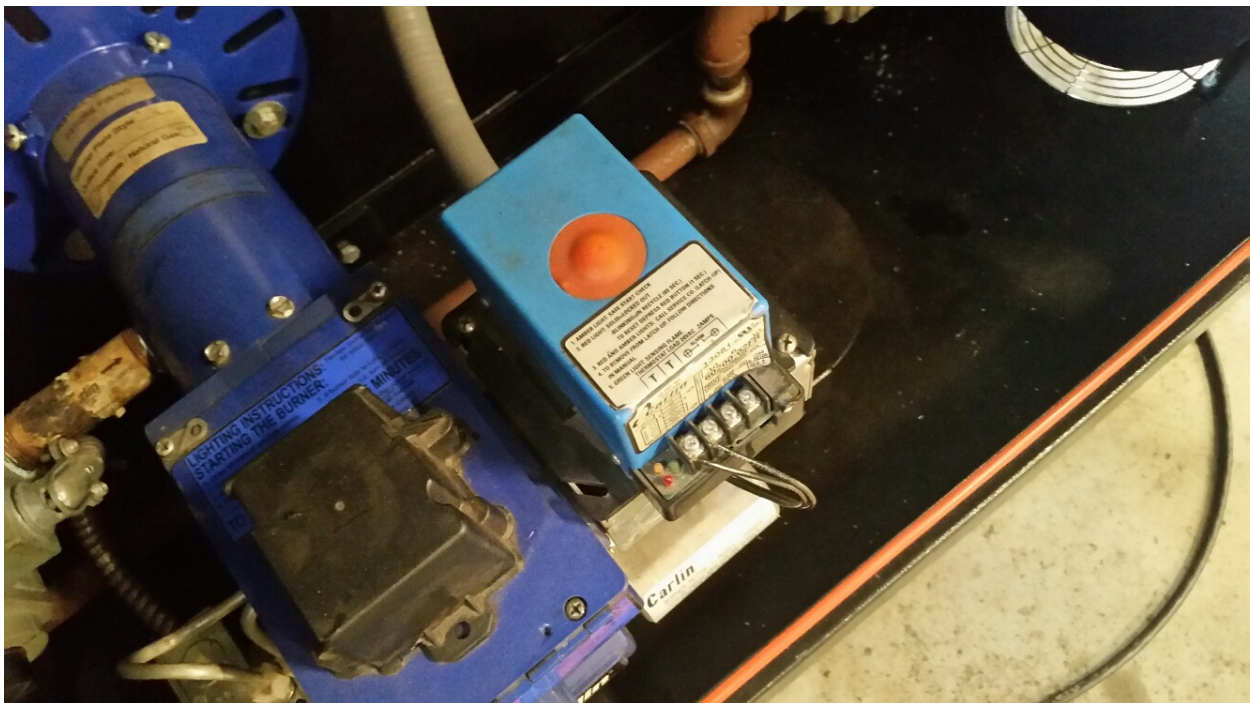
## **DANGER**

**If you smell gas:**

- 1. Shut off gas to the appliance.**
- 2. Extinguish any open flame.**
- 3. If odor continues, keep away from the appliance and immediately call your gas supplier or fire department.**

If the burner does not light when there is a call for heat:

1. Open the access panel/door on the burner enclosure.
2. If the red light is on (old style control) or there is an error message on the burner control screen (new style control), Proceed to Step 3. If the Red and Amber lights are on (old style control) or the burner control screen (new style control) displays "Latch-up", call a qualified service technician.



**OLD STYLE CONTROL**



### NEW STYLE CONTROL

3. Press the reset (Red) button for 1 second. The burner should start its cycle. If the burner lights and appears to be operating properly, close the access panel/door and resume normal operation of the unit. If the burner does not light or does not operate properly, shut down the unit and call a qualified service technician.